

( )

(2)

(1)

(1)  
(2)

2010/07/12

2011/03/24

)

(

( )

.( )

:

# **Biostratigraphy of the Marine Neogene in the Salquine Area (NW Syria)**

**K. Maalouleh<sup>(1)</sup> and I. Salloum<sup>(2)</sup>**

<sup>(1)</sup> Department of Geology, Faculty of Sciences, Damascus University, Syria.

<sup>(2)</sup> General Establishment of Geology and Mineral resources, Damascus, Syria.

Received 12/07/2010

Accepted 24/03/2011

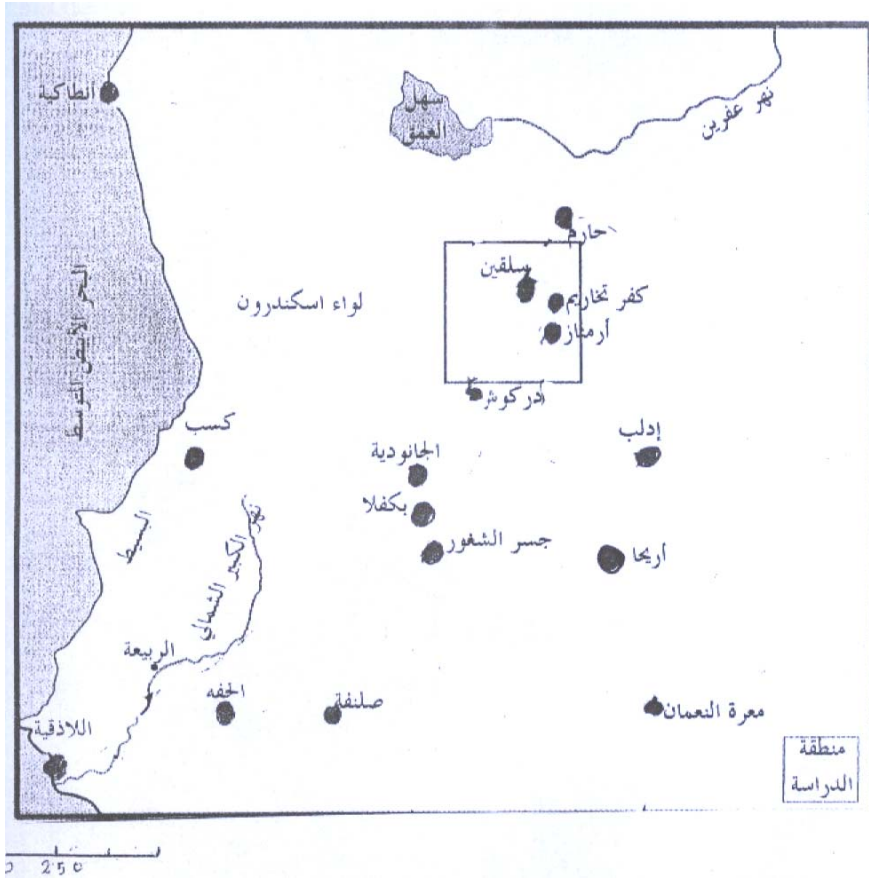
## **ABSTRACT**

The lithologic and palaeontologic study of the marine Neogene in Salquine area (NW Of Syria) gave new data which allowed the distinguishing of a number of lithostratigraphic units and the determination of their ages. This led to precise lithostratigraphic correlations between the studied area and the neighboring areas, and finally a clear knowledge of the geological evolution of the area during the Neogene. The stratigraphic distribution of the planktonic foraminifera in the area showed a perfect agreement with what is known during the Tethys Neogene. The comparison with the neighboring areas led to the discovery of an important stratigraphic lacuna in Salquine area during salinity period of the Upper Miocene of the Mediterranean region.

**Key word:** Neogene, Miocene, Pliocene, Stratigraphy, Planktonic foraminifera, Mediterranean sea, Syria.

)

( - ) (1).



(1)

( )

---

-

(1966 ) 1500

600

: (1949 )

( )

-

: ( ) ( - )

- 1

( ) - 2

- 3

- 4

:

- 1

(2 ) -

-

:

- 2



(2)

(1 )

( - )

(Payne & Robertson,1995, McCallum

.& Robertson, 1990)

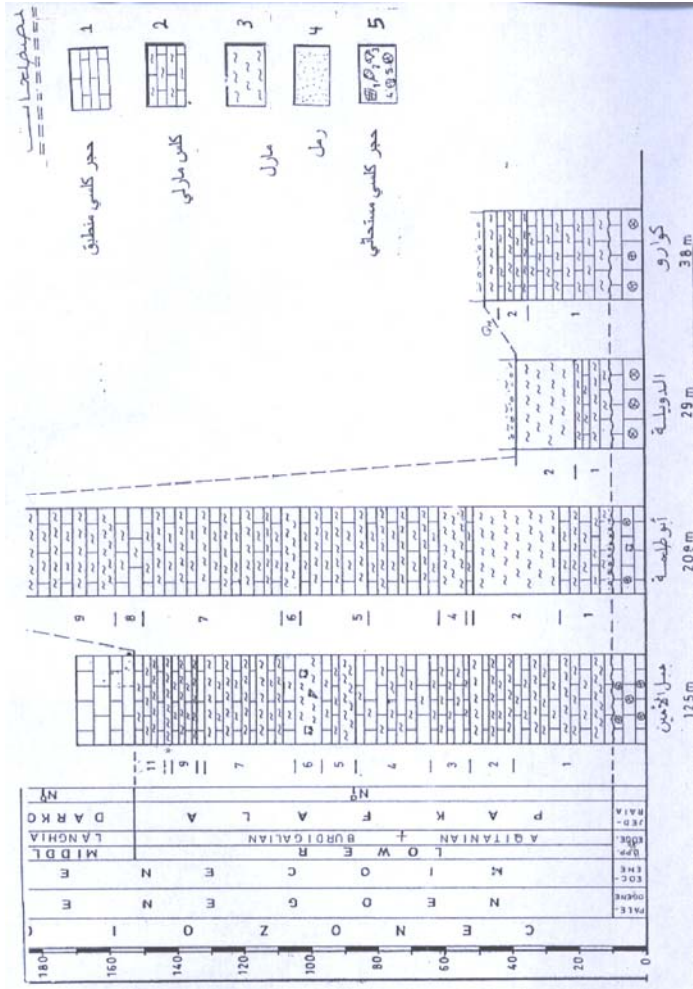
( )  
1937 1966 1937 :  
2003 1966 1967  
.1984 2001 1996 1991 :

(Planctonic: ) ( )

:

- 1

(3 ) :



( )

(3)

)"  
15

(

: ( )

*Globigerinoides trilobus* (REUSS); *Globigerinoides subquadratus* (BRONNIMANN); *Gs. primordius* (BLOW & BANNER); *Dentoglobigerina altispira* (CUSHMAN & JARVIS); *Globigerina bolli* (BOLLI); *Gg. falconensis* (BLOW); *Gg. woodi* (JENKINS); *Gg. praebulloides* (BLOW); *Globorotalia stakensis* (LEROY); *Globoquadrina venezuelana* (HEDBERG); *Gq. praedehiscens* (BLOW & BAUNER); *Gq. binaiensis* (KOCH);

- ( )

(1966 )

( )

200-160

.(3 ) 45

- 2

135-125

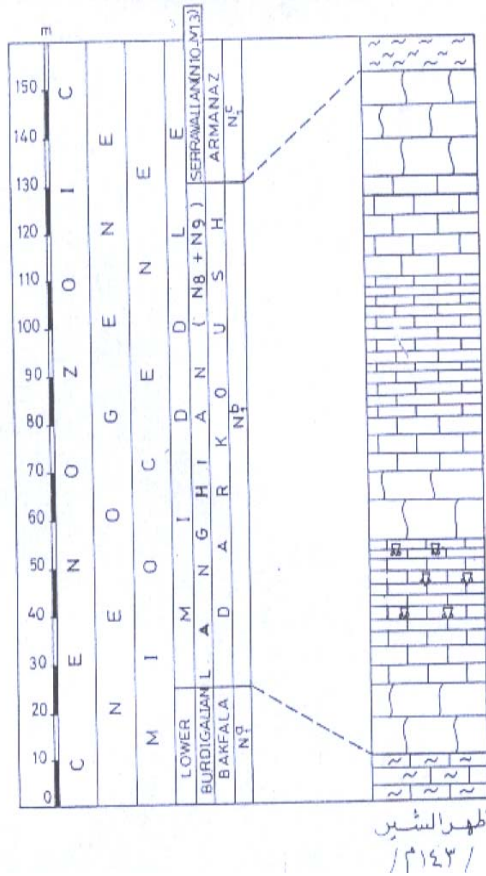
" "

. 150

.(4 )

400





( )

(4)

: ( )

*Globorotalia peripheroronda* (BLOW & BANNER); *Orbulina suturalis* (BRONNIMANN); *Praeorbulina glomerosa* (BLOW);

( )

(Langhian) :

( )

( )

. 120

120

67

: ( )

*Globorotalia peripheroacuta* (BLOW & BANNER); *Gr. aff. fohsi* (CUSHMAN & ELLISOR); *Gr. stakensis* (LE ROY); *Globigerinella obesa* (BOLLI); *Orbulina suturalis* (BRONNIMANN); *Biorbulina bilobata* (D'ORBIGNY); *Dentoglobigerina altispira* (CUSHMAN & JARVIS); *Globoquadrina dehiscens* (CHAPMAN & PARR & COLLIN); *Gq. langhiana* (CITA GELATI); *Globigerina druryi* (AKERS); *Globigerinoides trilobus* (REUSS); *Globigerinoides subquadratus* (BRONNIMANN); *Gs. obliquus* (BOLLI); *Gs. bisphaericus* (TODD); *Praeorbulina transitoria* (BLOW);

( )

( )

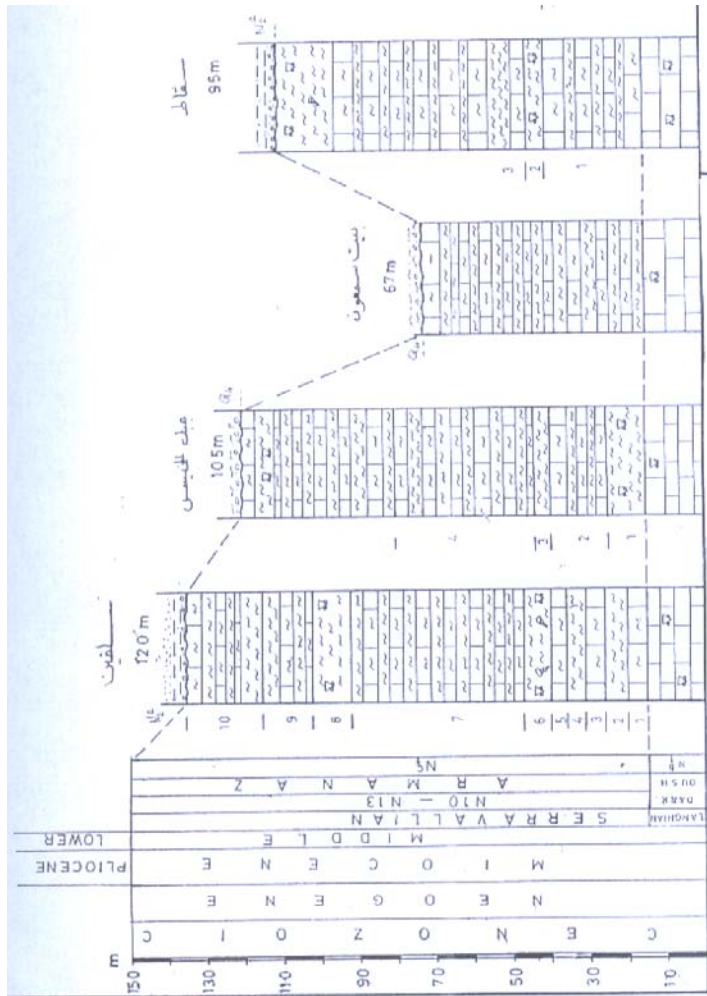
(Serravallian : )

(5 )

: - 4

)

300



( ) (5)

: ( )

*Globigerinoides sacculifer* (BRADY); *Globigerinoides ruber* (D'ORBIGNY); *Orbulina universa* (D'ORBIGNY); *Globigerina bulloides* (D'ORBIGNY); *Globigerina aperture* (CUSHMAN)

: - 5

25

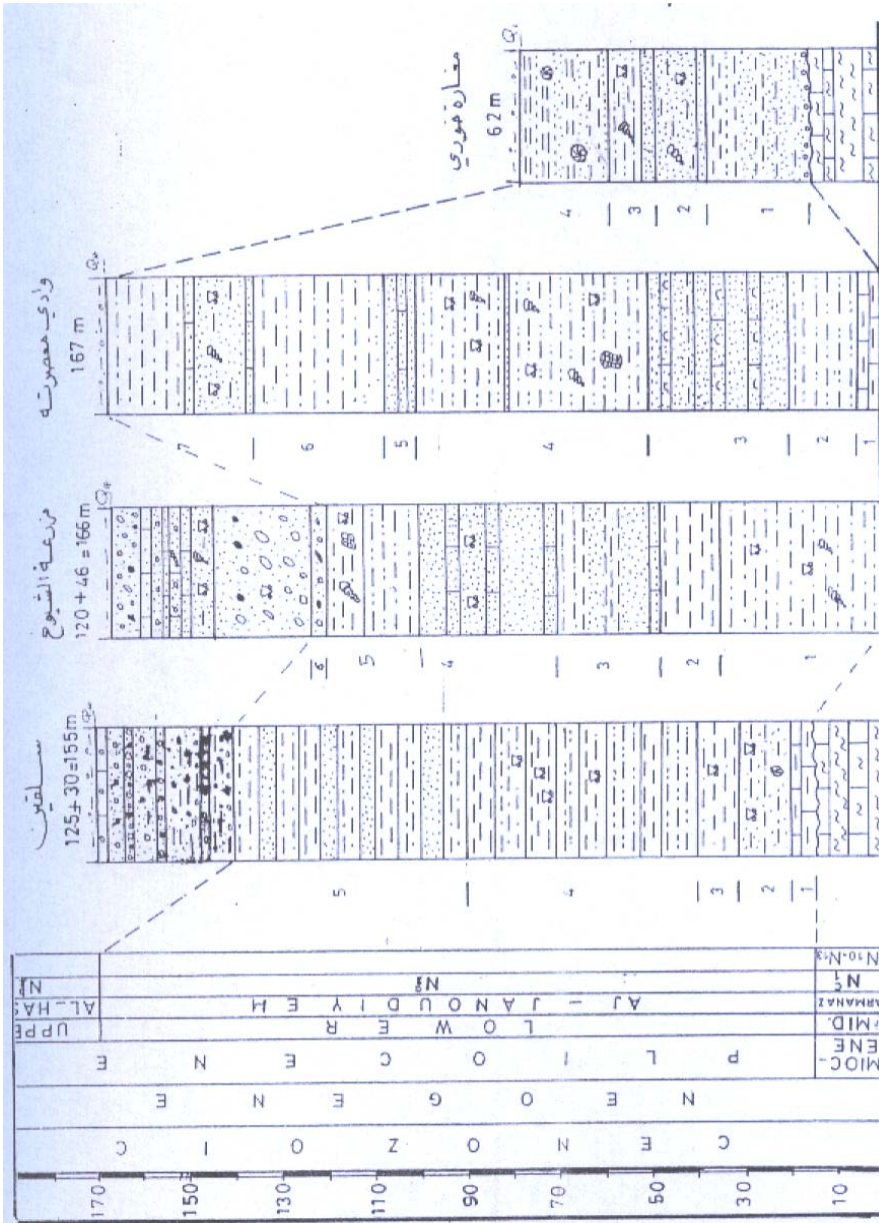
*Streblus beccarii* (LINNE); *Elphidium cripum* (LINNE);  
*Elphidium macellus* (FICHTEL & MOLL); *Bulimina costata*  
(D"ORBIGNY); *Cassudulina rassa* (D"ORBIGNY)--

( )

(7 )

( )

(6 )

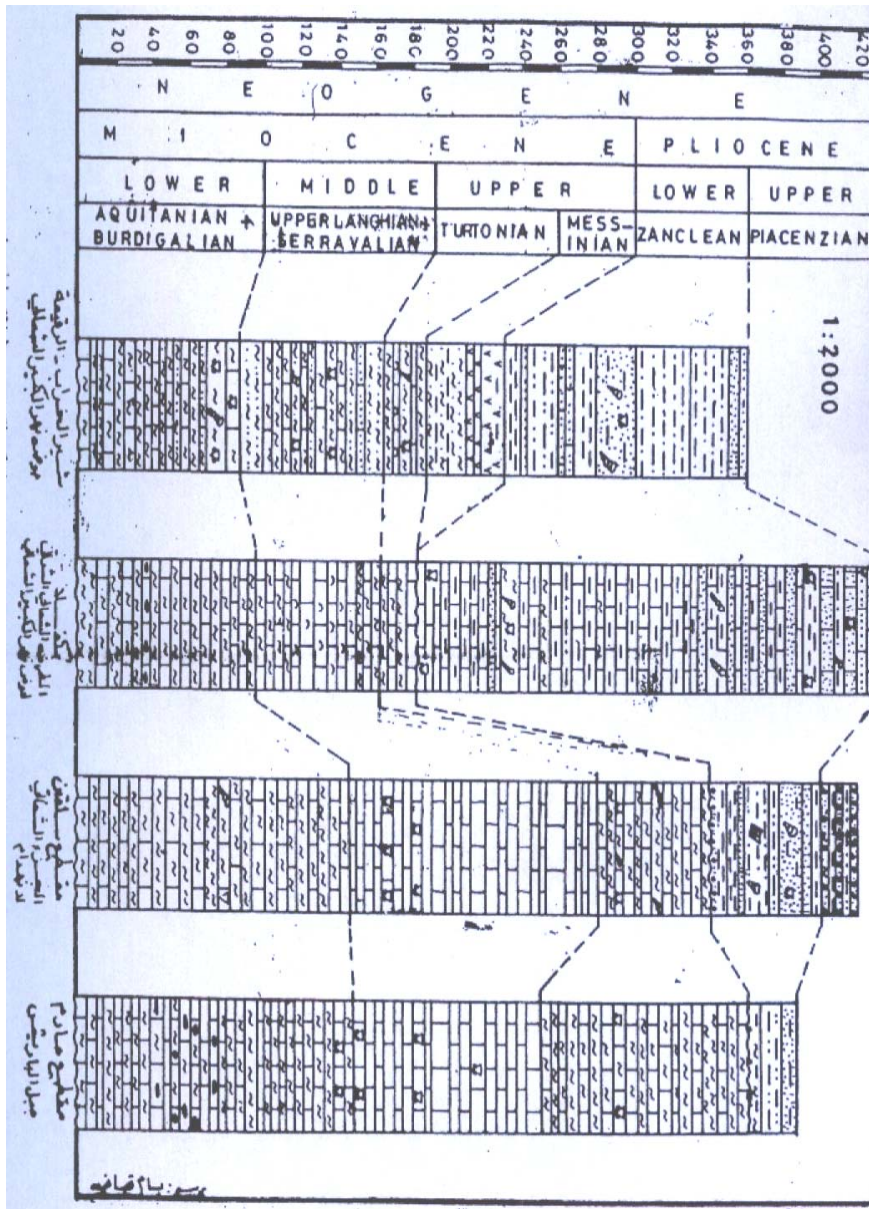


)

(6)

C E N O Z O I C										ERATHEM
N E O G E N E										SYSTEM
M I O C E N E					P L I O C E N E					
L O W E R					U P P E R					SERIES & STAGE
AQUITANIAN + BURDIGALIAN					SERRAVALIAN					
										QUATERNARY
										PLIOCENE
										LOWER
										UPPER
										HOLOCENE
										PLISTOCENE
P <sub>2</sub> <sup>a</sup>	29 - 137	100 - 143	67 - 130	25 - 167	29	43	THICKNESS			
	Ni <sup>a</sup>	Ni <sup>b</sup>	Nj <sup>c</sup>	Nk <sup>d</sup>	mNc <sup>e</sup>		SYMBOLS-SUBFORM			
JEDRAIA	B A K F A L A	D A R K O U S H	A R M A N A Z	A J - J A N O U D I Y E H	ELH ASHE		FORMATION			

(7)



(8)

( )

---

( )

:

- 1

- 2

( )

- 3

- 4

(Macrofossils)

- 5

:(8 )

( - ) -

(Zanclean : )

( - )

•

•



## REFERENCES

- Dubertret, L. (1937). Sur le Pliocene marin des environs d'Antioche (Syrie). *C.R. Acad. Sci. Paris*
- Dubertret, L. (1966). Liban, Syrie et bordure des pays voisins. *Notes et Mem. Moyen-Orient*, 8, p. 251-358
- Dubertret, L., Vautrin H., Keller, A. (1937). La stratigraphie du Pliocene et du Quaternaire marins de la cote libano-syrienne; *Notes et Mem. Syrie et Liban*, 2.
- Maalouleh, K. (2003). Les depots du Neogene marin dans le bassin de Nahr Al Kabir-Ach-Chimali (NW Syrie). *Fifth International Conference on the Geology of the Middle East*, Cairo, Egypt, pp.59 – 64
- Mccallum. J. E., Robertson, A. H. F. (1990). Pulsud uplift of the Troodos Massif: evidence from the Plio-Pleistocene Mesaoria basin, in: E. MOORES (Ed.), *Ophiolites and oceanic lithosphere. Proc. Int. Symp.*, Nicosia, Cyprus
- Payne, A. S., Robertson, A. H. F. (1995). Neogene supra-subduction zone extention in the Polis graben system, West Cyprus. *J.Geol. Soc. London*, 152, pp. 613 - 620
- Ponikarov, V. P. (1966). Geological map of Syria. Scale 1/200 000 *Explanatory Notes*. Ministry of Industry, Syria
- Salloum, I. ( ). The stratigraphy of Neogene in Syria. *Repport inedt. Dept. Geol. Min. Research*; Ministry of Petroleum and Mineral Ressources; Damascus
- Youssef, Sh. (1979). Geological map of Haffeh; 1/50 000. *Explanatory note, Dept. Geol.Min. Research*; Ministry of Petroleum and Mineral Ressources; Damascus
- .(1969) . .
- .( )
- .(1991) .
- .(2001) .
- .50 000 /1