

*

)

(

% , :

(=n ,% ,) (=n ,% ,)

,% ,) (p= , -)

(=n ,%) (=n

(=n ,% ,) (p= , -)

(p= , -) (=n ,% ,)

Oral Disease related to Qat chewing in Yemen

*Dr. Aiman Ali

Abstract

Chewing Qat is a common habit in the Yemen society. Various studies demonstrated clear effects of this habit on the Yemen society, in general, and the systemic organs of the human body in particular. The absence of studies about the effects of chewing Qat on teeth, supporting tissues, and oral mucosa was the major motive for this study.

Materials & methods: This study was made on Yemeni citizens (mean age , years, male, female). Clinical were made for all cases with a full intra-oral clinical examination.

Results: It was found that were qat chewers and this rate obviously increases more in male, than female. White lesions appeared on the oral mucosa in cases (. n=) of chewers, while the percentage was only cases. (n=) in non-chewers (p= , -). cases (, . n=) of chewers had gingivitis, while there were cases (. n=) of non-chewers (p= , -). Finally cases (, . n=) of chewers had periodontitis where as there were only cases (, . n=) of non-chewers (p= , -).

* Ass Prof. DDS.PhD. P O Box Sana'a Yemen. E-mail: euskal _ @hotmail.com

It is concluded that chewing Qat affects the gum and supporting tissue, and provoke, the development of white lesions on the oral mucosa.

Catha

:

Edulis

Celastraceas

[].(Raman Revri)

Catha

()

Edulis

Catha Edulis

Qat

Catha Edulis Forskal

(Lebras and

Fretillere)

[].(Krikorian)

)
[](

[].(Kalix & Braenden

Cathinoine ()
& Cathine ()

Aminoacids

Choline (A,B ,B ,C)

. [](Afendi,)

[](Schopen) [](Hughes)

CNS

%

(Hill and Jibson

,mydriasis

. [] () case control .

[] (Kennedy)

: [] (Kristiansson,)

,congestion

[] (Halbach)
.tachycardia& palpitation



- -

:

,

:)

- :

:

:(

:

-

:

.

-(Water pipe)

:

- -)

(Smokeless tobacco) (-

() ()

()

()

()

()

()

()

Leukoedema

[](Lynch et al.,)

)

()

. I

()

) Homogenous

(Leukoplakia

[](Axell, et al.,)

.(I-III)

() ,III

SPSS

I

) III

(Odds ratio, RR)

(

Epi-enfo

.II

Chi

.P≤ ,

: -

,

()

()

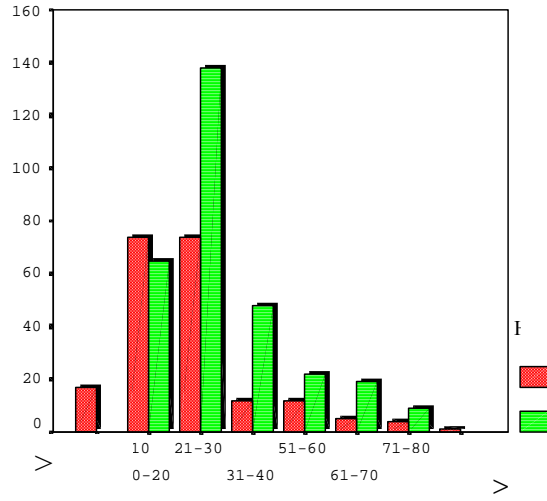
(% ,) . (,)

()

()

.(%,)
 .(%,) : (%,)
 (%,)
 ()% ,
 ()% , %
 %
 %
 %
 .()
 ()% ,
 (= n, % ,)
 ()% , n, % ,) ,
 (=
 smokeless tobacco (= n)
 , (%,)
 ()% , :
 (%,) ,(%,)
 -
 ,(%)

(% ,)



:()

(= n , % ,)

(= n , % ,)

(p= , -)

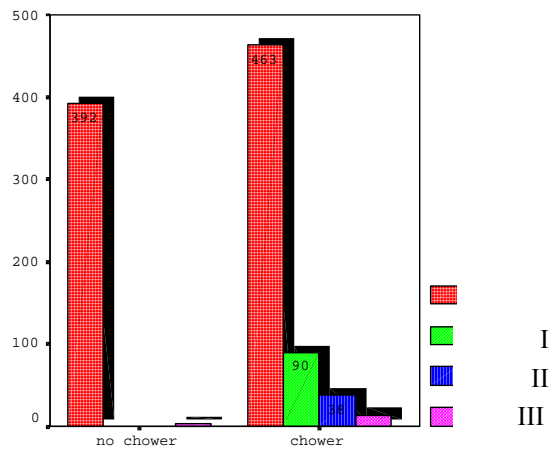
:

()

(= n , % ,)

(= n, % ,)

(= n, % ,)



:()

= n

(% ,)

,()

(% ,)

(= n, % ,)

(% ,)

.(p= , -)

(= n, %)

(% ,)

(% ,)

(=n,% ,)

(% ,)

(% ,)

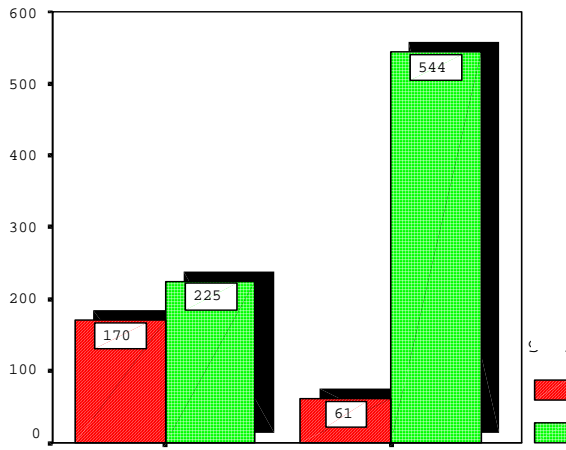
(=n,% ,)

(% ,)

(p= , -)

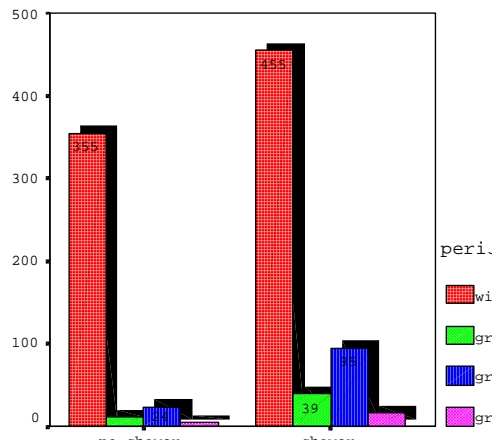
(% ,)

:



:

:()



:()

, (% ,) n (% ,)
 : =
 (% ,) (% ,) :
 (% ,) , (% ,)
 : (% ,)
 ,
 , % , (% ,) :
 , % ,
 , (% ,)
 (%)

$\% ,$
 $[](\text{Ali}, \quad) .$
 $\% ,$
 $(\quad =n)$
 $\%$
 $(\quad =n) \% ,$ $\%$

odds) (p= , -)
 (ratio= , RR=
 $[](\text{Ali}, \quad)$
 $\%$
 -(: (=n)

Frictional
 -(. Keratoses
 $\% , ,$ $\% ,$
 $\% , ,$ $\% , ,$

(=n ,%)

% ,
,)

(=n

(=n ,% ,)

(=n , ,)

[1](Shafer et al.,) (

,p= , -)

(odds) (p= , -

odds ratio= , , RR=

(ratio=) RR=

RR, Odds ratio

P

-
- Afendi A H. . Comparative study of nutritional status assessed by anthropometrics and biochemical measurements as well as food habits of chosen population in Yemen and Poland. A. M. Poznan-Poland.
 - Ali A.A. . Evaluacion de paramitros clinico-patologicos de importancia pronostica en la transformacion maligna de la leucoplasia oral. Thesis doctoral: UPV university. Spain.
 - Axell T, Holmstrup P, Kramer IR, Pindborg JJ, Sheear M, . International seminar on oral leukoplakia and associated lesions to tobacco habits. Malmo, . Community Dent Oral Epidemial. :
 - Halbach H. .Medical aspects of the chewing of khat leaves.Bull.WHO : - .
 - Hill C M, Gibson A, . The oral and dental effects of qat chewing. Jornal of Oral Surgery, : () - .
 - Hughes P, . Qat chewing in Yemen. Papers presented at the th int. council on drug dependence. PP. - . Lausanne, Switzerland.
 - Kalix P & Braenden O. . Pharmacological aspects of the chewing of qat leaves. Pharmacological reviews. (): - .
 - Kennedy J . A medical evaluation of the use of qat in the north of Yemen. Soc. Sci. Med, : - .
 - Krikorian A. . Qat and its use: A historical perspective. J. Ethnopharmac, : - .
 - Kristiansson B . The use of qat in lactating women. J. Ethnopharmac, : - .
 - Lynch MA, Brightman VJ, Greenberg MS. . Burkets Oral Medicine. th edition. New York: Lippincott- Raven.
 - Raman Revri . Catha Edulis Forskal. Geographical dispersal, Botanical, Ecological and agronomical Aspects with special reference to Yemen Arab Republic. Gottingen D-
 - Schopen A, . Das Qat research reports of the dept. of Ethnology. University of Frankfort, GFR, ed by Franz Steiner Verlag. Wiebaden, GFR
 - Shafer WG. Et al. . Oral Pathology. th edition. Philadelphia: W B Saunders co.
 - World Bank Report no. -YE, .

// :

// :