

*

%88.79

*

Panoramic Radiography in the Assessment of Maxillofacial Injuries

Haytham Bahhah *

Summary

Despite of the great evolution in the field of radiological technologies , panoramic radiography is still the most important radiological –diagnostic method in the maxillofacial area .

Panoramic radiographs reveal a wide area of tissue in one x-ray.

In addition . It seems to be preferred by the maxillofacial surgeon due to its simplicity and rapidity of application , and low dose of radiation.

In oral and maxillofacial fractures , panoramic radiography is still the best way of having a quick and preliminary diagnosis of most of these fractures. In our study we made a precise diagnosis of about 88.79% of our cases by using this method .

For that we recommend to use panoramic radiography in most cases of oral and maxillofacial injuries .

In cases that clinical diagnosis does not match the panoramic radiography diagnosis we must look for another radiological method.

* Ass. Prof. Maxillo-facial Surgery Dept. Faculty Of Dentistry- Damascus University.

: -

(13)(6)(12)

(Advantages) :

(4)

: -1

.(3)(8)

: -2

: -3

: -4

:(9)(5)

(11)(Disadvantages):

-1

: -1

-2

: -2

.(1)

-3

: - : -3
296 .(12)
(88 208) :

2001 -1998 .

:
: -1

. -2
. -3
. -4
. -5

:

60			-1		:	-
	%100	60			:	
52			-2	60		-1
	% 100	52		% 17.24		
68			-3			
	% 100	68		52		-2
32			-4	% 14.94		
	% 100	32				
68			-5	68		-3
	%77.27	88		% 19.54		
10			-6			
	%83.33	12		32		-4
				% 9.19		
	%83.33	348	290			
				88		-5
.(-)		% 25.29		
				48		-6
				% 13.79		
			296	348		

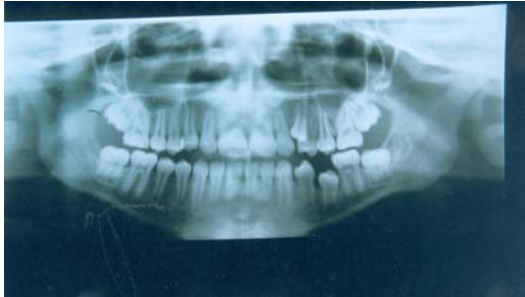
:(1)



:(2)



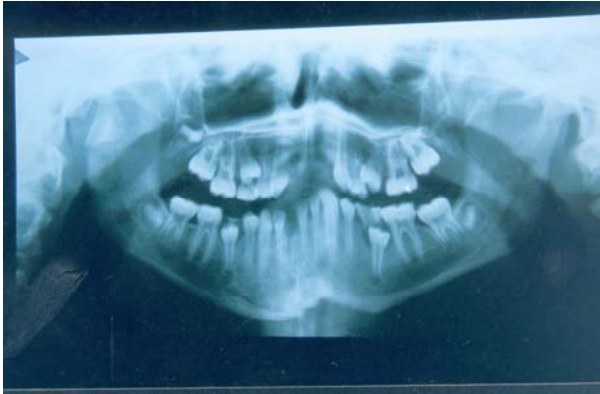
:(3)



:(4)



:(5)



: -

Hanfee

1992 WN,Show WW

%89

%100

.%75

.(10)

.(14)

Davidson MJ,Daly BD
Dental hospital Leeds
1990

%83.33

.(7)

)

.(

%77.27

1986 Zaluzek D,Jahr Sdoerfen
.(15)

Thomas

Kittner

Braud

1981 T,Zawadzki M

10

18

.(2)

References

- (1) Beter booth, Stephen Schendel, Jary hausman, maxillofacial surgery, radiology for maxillofacial trauma , V.1 ch .18 . 259 – 286.
- (2) Brand T,Zawadzki M. computed tomography in maxillo facial trauma : laryngoscope 1981.
- (3) Can gland . langlars . Moris : principles and practice of panoramic radiology .1982 P.1
- (4) Dalan KD,Jacaby CG, Smoker WR.The radiology of facial fractures ..Radiographics 1984;4:575-663.
- (5) Damascelli : Basic concepts in diagnostic imaging . 1990 P.52
- (6) Dan Krotz Diagnostic Imaging in : www.dimag.com 1999
- (7) Davidson MJ,Daly BD.computed tomography in the diagnosis of maxillo facial trauma:J oral maxillofac surg 1990oct;28(5):287-91.
- (8) Delbalso maxillofacial imaging . 1990 P.5
- (9) Hanfee WN. Computed tomography versus standard radiography:Ann plasturg 1992 Aug;29(2) :109-13.
- (10)1. Kassel EE, griss JS Imaging of fractures . Current concepts in imaging of craniofacial trauma . Neuroimaging clin N A m 1991 ; 1: 259-283 .
- (11) Robbins KT, Harris J Jr , Zaluzec D, Jahrsdoerfer R Radiological evaluation of mid-third facial fractures : J Otolaryngol 1986 Dec ; 15 (6) : 366-72
- (12) Rowe NL , Killey HC 1968 The radiography of the facial skeleton . In : Rowe NL , Rilley Hcceds fractures of the facial skeleton , zmd edm . E&S Livingstone , 559 – 588
- (13) Thomas Kittner. The value of coronal computers tomograms in fractures of mandibular condylar process;oral and maxillo facial radiology Vol .87.No:5.
- (14) Zaluzek D,Jahr Sdoerfen. Radiological evaluation of mid-third facial fractures:J Otoryngol 1986 Dec:15(6):366-72.

.2003/1/15:

.2003/10/1 :