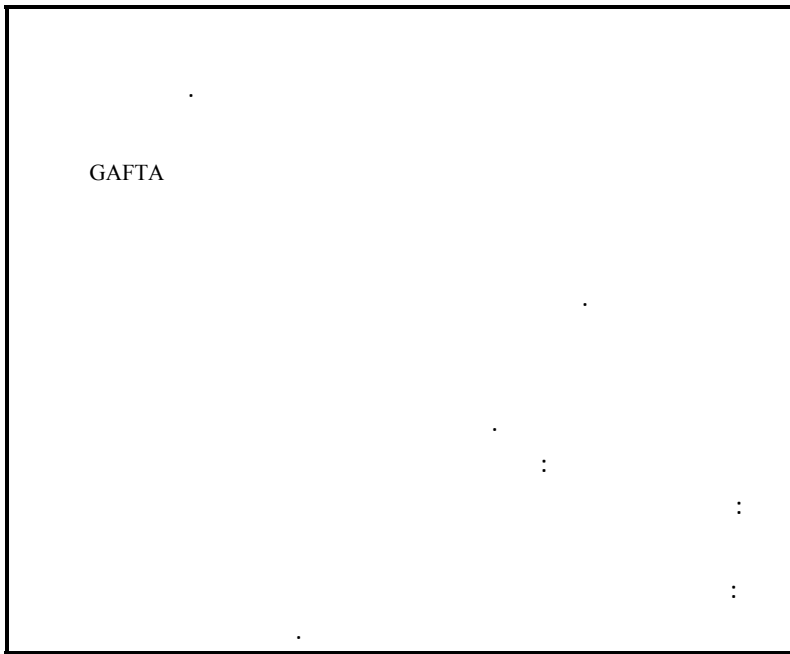


GAFTA

( GAFTA )

-



:

1953 -  
%25

.1953 -

.1957 -

.1964 -

.1981 -

15

19

(0)

/1317/

1996 - 1997/2/9

.8 1 -1

.2

200

2002 .

(1)2007/12/31 2005/1/1

:

:

-1

-2

-3

:

:

-

-

)

.(

-

-

---

.3

(1)

:

:

:

-1

-2

) 1998

(2004

:

:

:

-1

-2

-3

-4

	:
	-1
	-2
	:
.2004-1998	-1
	-2
	-3
	-4
	:
	:
:	:
	-1
	:
:	:
.1981	-
	-
	-
(1)	-
<hr/>	
.198	2003 (1)

1983

1981

1992 1985

1997/2/19 /1317/

.1996

-2

:

%10

.2007/12/31

1998/1/1

.2007/12/31

2005/12/31

2005/1/1

2004/1/1

%20

.(1)2005/1/1

%100

%40

)

.(....

2005/1/1

---

.199 2004

(1)

.....

	%16	%20	
		(2)2010/1/1	
.(	-	-	)
		:	-3

( )

10

45

68

2001

45

7

10

35

:

---

(2)



-1

( )

-2

-3

-4

( )

(1)

-5

: -4

:2005

-

-

-

-

-

-

)

.(

---

.203-202 2000 (1)

:

:

-1

:

)

(

2005

2004 - 1998

(1)

2004	2003	2002	2001	2000	1999	1998	
396.5	304	245.0	236.7	259.7	171.0	136.7	
34.7	25.5	20.9	17.3	16.1	14.0	13.8	( )
8.7	8.4	8.5	7.3	6.2	8.1	10	% _____
243.1	194.9	171.5	161.0	149.7	146.7	153.9	
29.8	21.8	20.2	17.1	15.7	13.0	12.5	( )
12.2	11.2	11.8	10.6	10.5	9.3	8.1	% _____
64.5	47.3	41.1	34.4	31.8	27.1	26.3	
639.6	498.9	416.5	397.7	409.4	317.7	290.6	
10.1	9.6	9.9	8.6	7.8	8.7	9	% _____

:

.140 139 134 2005  
141 136 2003

2004 2000  
1999 -1998

:

2004 -1998

( ) (2)

	2004	2003	2002	2001	2000	1999	1998	
12.7	36.1	21.7	21.3	7.5	13.7	2	13.4-	
13.7	30.4	24.1	3.5	8.8-	47.9	25.1	26.3-	
13.2	36.3	8	18.0	8.8	15.3	3.9	2.2	
8.3	24.7	13.6	6.5	7.6	6.4	4.7-	4.1	
12.7	36.3	15	19.7	8.1	14.5	2.9	6.6-	

.139 134 2005 2004 2000 :  
 141 136 2003 1999 1998

136.7 (1) -  
 2004 2004 396.5 1998  
 %30.4 396.5 304 2003  
 ((2) )

34.7 1998 13.8  
 2004

2004 2000  
 .%36.3 2003

2004 243.6 1998 153.9  
 ) 2003 2004

---

	2004				(1)
12.5					
2004	%36.3	2004	29.8	1998	
2004			2003	%8	
				.%24.7	
64.5	1998	26.3			-
290.6			2.4	2004	
	2.2			639.6	
1998	%9				
			%1	2004	%10.1

(1)

)  
(

(1)

---

.144 2005 (1)  
(1)  
.8 2006/4/11

) -  
(

%22 %32 2004  
%62  
%78  
(2)%69  
-2  
:

%15  
(3)

---

.59 2004 (2)  
.55 2004 (3)

2003-2000

(3)

/												
%												
2003	2002	2001	2000	2003	2002	2001	2000	2003	2002	2001	2000	
42.9	46.4	37	29.7	1456	1168	1239	1220	625	542	458	363	
20.1	17.6	31.1	28.9	684	669	556	556	137	118	173	161	
12.1	13.2	10.7	8	2198	2146	2170	1942	266	284	233	157	
3.9	4.8	0.9	0.6	3696	3567	3168	2893	144	173	28	19	
-	3.3	30.6	11.4	828	1005	592	1415		33	181	161	
42.7	39	28.8	29.7	1810	1956	1410	1364	773	764	406	406	
51.3	17.5	17.4	12.1	1550	1806	1939	1496	795	308	338	182	
2.6	13	1.8	-	332	340	294	686	8.5	46	5.3		
26.4	29.4	16.2	13.3	629	531	797	797	166	156	129	106	
-	23.8	23	-	1463	1463	1354	1354		348	312		
21.5	16.7	16.9	15.9	1680	1589	1534	1358	362	266	260	216	
9.1	8.3	8.2	12.8	3526	3837	3449	4238	322	317	282	542	
-	5.7	7.4	3	2874	2875	1329	3010		165	98	92	
-	-	0.9	-	252	250	218	228			2		
23	42.7	25	30.4	1400	1098	903	865	322	469	228	263	

2004

(3)

2003-2000

2003    %42.9    2002    %46.4  
           .2003    %23    2002    %42.7

(2002-2000)

(4)

2003	2002	2001	2000	2003	2002	2001	2000
	46.9	29.1	22.2		9.7	9.5	9.1
77.9	77.1	80.9	76.1	26.2	21.4	18.5	13.8
	-	-	3.6	-	-	-	12.4
13.9	14.4	25.8	29.8	21.8	18.4	35.0	28.9
18.8	25.5	17.0	13.8	6.6	4.8	5.8	3.8
14	20.4	1.7	4.2	3.5	3.9	0.8	0.5
-	72.1	48.0	56.8	-	9.1	11.6	3.9
68.8	73.4	63.0	54.6	18.1	12.0	8.0	11.9
57	24.3	24.4	9.0	48.7	18.3	24.2	13.3
10	70.6	21.4	-		1.0	-	-
3	-	2.4	1.9	46	-	18.8	15.5
-	-	38.2	-	-	-	20.6	-
47.5	-	48.4	54.3	16.6	-	12.9	11.7
-	15.6	31.3	-	-	0.0	0.0	-
24.8	28.3	31.4	81.1	3.9	3.4	3.6	2.0
-	-	6.8	5.6	-	-	1.3	2.4
-	-	1.3	-	-	-	-	-
42.4	66.3	52.9	90.0	18.7	39.1	19.9	31.3

.276 .(11/3) 2004 2002 2000 :  
 .2004 2003

(4)

2003-2000

(4)

2003-2000

:

:

:

-1

2004 - 1998

( )

(5)

2004	2003	2002	2001	*2000	1999	1998	
249014	265039	301553	243179	216190	38880	32443	
327019	236768	235754	220744	187535	43010	43724	
576033	501807	537307	463923	403725	81890	76167	
78005-	28271	65799	22435	28655	4130-	11281-	

2005

:

.56 2004

(1)

/ . 11.25 2000

/ . 46

/ . 11.20

/ . 46.5



2004 -1998

( ) (6)

2004	2003	2002	2001	*2000	1999	1998	
46527	45164	55671	37864	30849	8496	10014	
202487	219875	245882	205315	185341	30384	22429	
18.7	17.8	18.5	15.6	14.3	21.8	30.8	/ %
81.3	82.2	81.5	84.4	85.7	78.2	69.2	/ %
68750	54790	50490	37656	43495	10940	9787	
258269	181978	185264	183088	144040	32077	33938	
21	23.1	21.4	17	23.2	25.4	22.4	/ %
79	76.9	78.6	83	76.8	74.6	77.6	/ %
115277	99954	106161	75520	74344	19436	19801	
460756	401853	431146	388403	329381	62461	56367	
20	19.9	19.7	16.3	18.4	23.7	26	/ %
80	80.1	80.3	83.7	81.6	76.3	74	/ %

(6) (5)

: 2004-1998

2002  
301553

65799 2002

1999-1998

2001

2004

78005-

-2

:

2004 -1998

GAFTA

( )

(7)

2004	2003	2002	2001	2000	1999	1998	
74574	55326	66738	37370	34977	8149	9036	GAFTA
29.9	20.8	22.1	15.4	16.2	20.9	27.9	% /GAFTA
54053	31790	28228	20755	20186	3571	3441	GAFTA
16.5	13.4	11.9	9.4	10.8	8.3	7.9	% /GAFTA
128627	87116	94966	58125	55163	11720	12478	
22.3	17.4	17.7	12.5	13.7	14.3	16.4	/GAFTA
576033	501807	537307	463923	403725	81888	76167	

:

(7 )

-

) 1998

9036

\* 2004

74574 (

1998 %27.9

46.5

2000

\*

11.20

46

11.25

2001 %15.4

) 2004 %29.9

.( %80

54053 1998

3441

-

1998 %7.9

2004

.2004 %16.5

-

:

:

( )

(... )

( )

155 121

:

GAFTA

2004 - 1998

( ) (8)

2004	2003	2002	2001	2000	1999	1998	
46527	45164	55671	37864	30849	8496	10014	
33658	29196	35906	20642	19167	5083	4812	GAFTA
72.3	64.6	64.5	54.5	62.1	59.8	48	/GAFTA %
68750	54790	50490	37656	43495	10940	9787	
13111	8630	4974	4034	4380	891	904	GAFTA
19.1	15.7	9.8	10.7	10.1	8.1	9.2	/GAFTA %
115277	99954	106161	75520	74344	19436	19801	
46769	37826	40880	24676	23547	5974	5716	GAFTA
40.6	37.8	38.5	32.7	31.7	30.7	28.9	/GAFTA %
22223-	9626-	5181	208	12646-	2444-	227	

- -

:

GAFTA

(8)

-

2004 %40.6 2001 %32.7 1998 %28.9

1997-1996

2001  
%32.7  
(1)32.8

-

2004 %19.1 1998 %9.2

%19.7 2003 %15.7 2003 2004

) %7.7

2004

: (97/96

.( ) ( )

1998 -

%48

%54.5 (97/96 )

2001 %54.5

.2004 %72.3 2003 2002 %64.5 2002

:

---

.28 . 2002 -

(1)

(2001 %54.5 )  
(<sup>(1)</sup>2001 %10.7 97/1996 %8 )  
-  
%.40  
%80 2004  
%.72.3  
-4  
:  
:( )  
:  
-

(1)

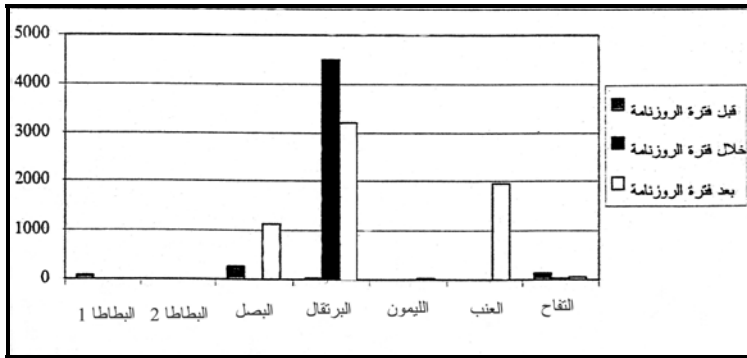
:

(1)

( )

2002

(1)



GDC :





.2002

-

-2

:

-3

-

-

-

-

(1)

-

:

-4

-

-

-

:

-5

-

-

-

---

.53 2002 8

(1)

.....

-

-

-6

-

-

-

-

:

:

( )

-

-

-  
-  
-  
-  
-  
-  
-  
-

			:
-2001 - 2000 -1999-1998)			-1
		.(2005 - 2004 - 2003- 2002	
- 1999 -1998 )		-	-2
		.(2003- 2002 -2001 - 2000	
		-	-3
		. 2004	
		-	-4
2002 -		-	
		.	
2004 )		-	-5
		.(2002 2003	
		-2004	-6
57 -		-	-7
		. 2003	
		-	-8
		-	-9
		. - 2000	
- 2004		-	-10
		.	
		-	-11

- -12  
-2005  
-13  
-14  
-2006/4/11  
-15  
-16  
( )

:

- 1- Balassa, B. (1985) Tariff Protection in Industrial Countries; An Evaluation; Journal of Political Economy,
- 2- Bhagwati, J.N.(ed) (1987) International Trade: Selected Readings (Cambridge).
- 3- Ray, E.J. (1981) Tariff and Non- tariff Barriers to Trade in the United States and Abroad, Review of Economics and Statistics 63, 161-8.
- 4- Vousden, N. (1990) The Economics of Trade Protection (Cambridge: University Press).

---

.2006/6/11