

*

• •

.

.

.

.

:

*

: -1

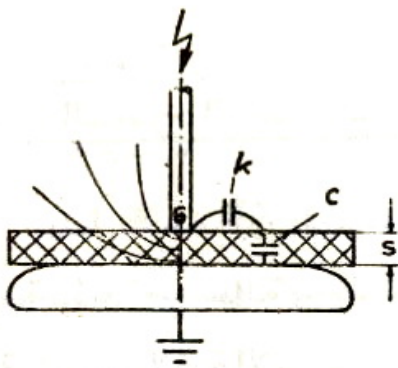
C

-

K

-

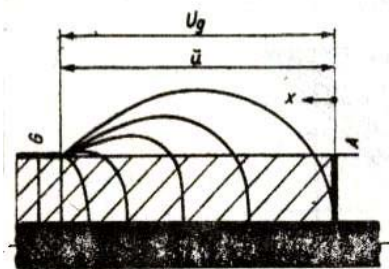
:(1)



(1)

()

:(2)



(2)

:[2] [1] -2

(
 (1kv\cm) K

-1
 -2
 -3) c
 (

[3] : -3

c
 :

$$i = C (du / dt) + u (dc / dt) \quad (1)$$

-
 -
 :
 ()
 -1
 -2)

S

-3

:1-3

C_s

(3)

(1)

CB

C_s

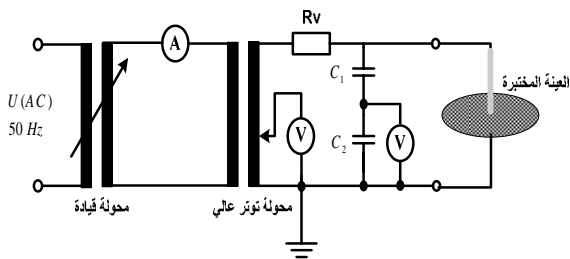
(3)

U_{max}

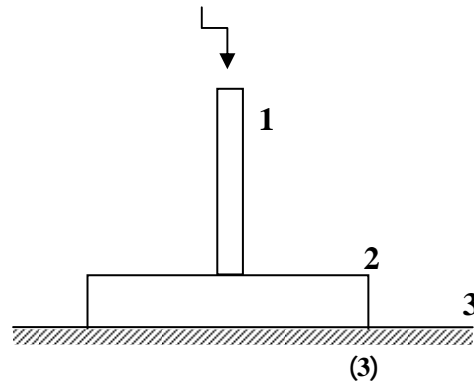
(2)

R_e

CB



(4)



:[4]

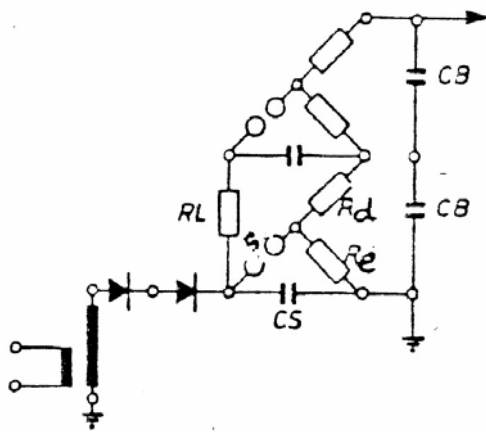
:2-3

:

:1-2-3

(4)

.100KV



(5)

:[3]

:3 -3

. R_v

:

:2-2-3

(5)

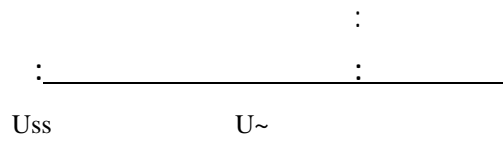
.D

100kV

U~

.U_{ss}

L



d =

:1-4

.(6)

d = 1cm 0.2 cm

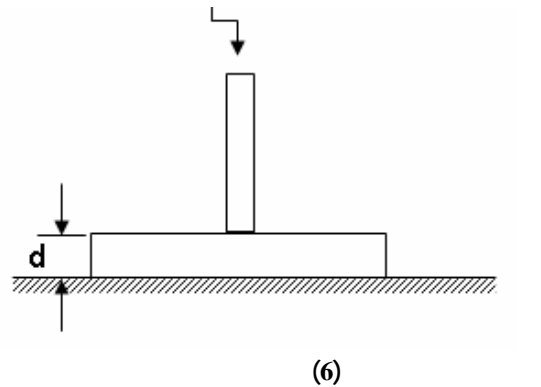
(8)

D

.d=0.2cm

25(kV/cm)

16(kV/cm)



(6)

1.5

(1-2)cm

Cm

U_{ss}

U~

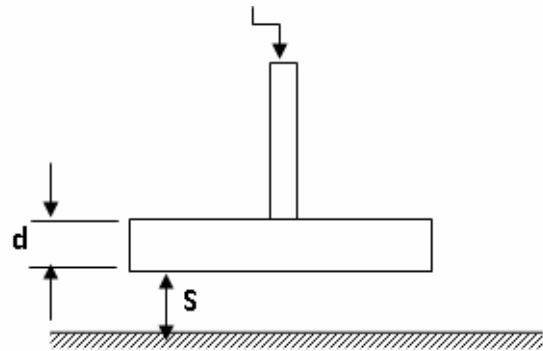
1(kV/cm)

S = [2, 4, 8, 10] cm

1.1(kV/cm)

.(7)

0



(7)

:

-4

1μS

10mS

.(8)

10

:

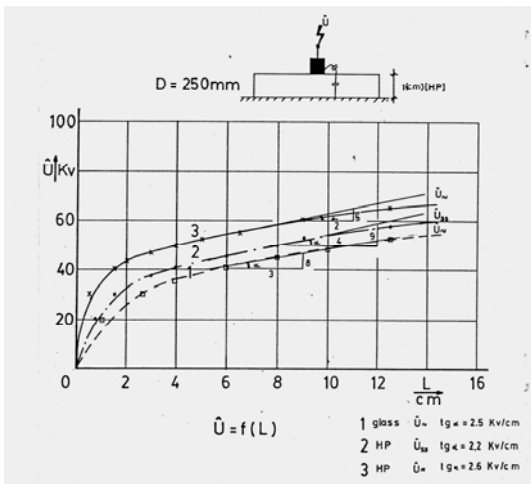
(10)

1(kV/cm)

$U=f(L)$

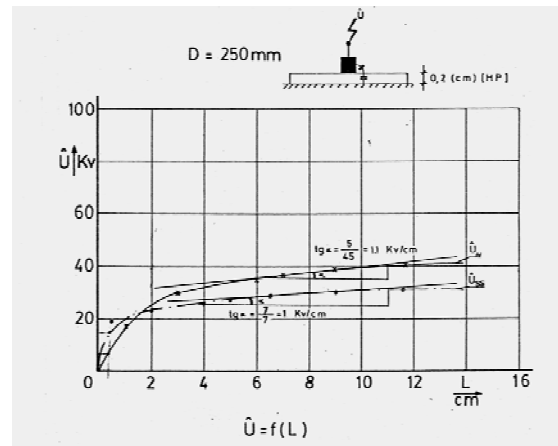
2.5(kV/cm)

.(1)



(9)

d=1cm



(8)

d=0.2cm

:3-4

:2-4

:

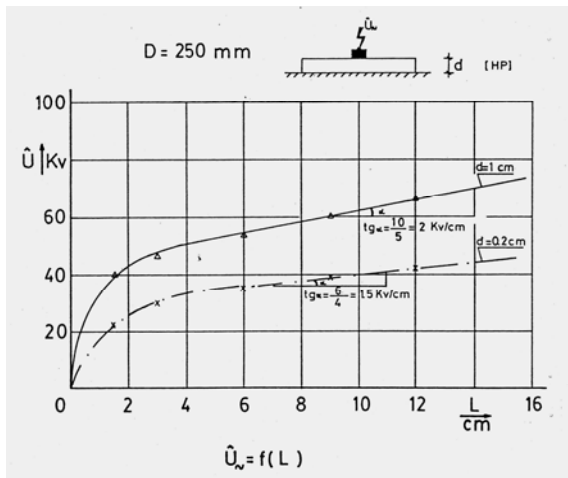
D

(10)

:

(9)

d = 1cm



(11)

(d = 1cm d = 0.2 cm

:5-4

d = 0.2

.d = 1cm cm

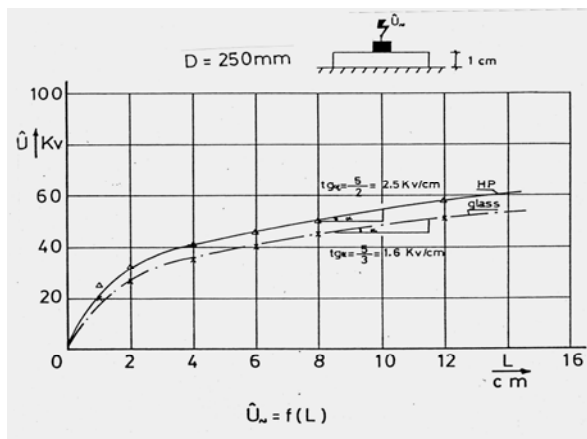
:

(12)

d = 0.2 cm

.d = 1cm

:6-4



(10)

$U_d = f(L)$ (13)

U_{ss}

U_{\sim}

L

D

(2)

(5÷7)

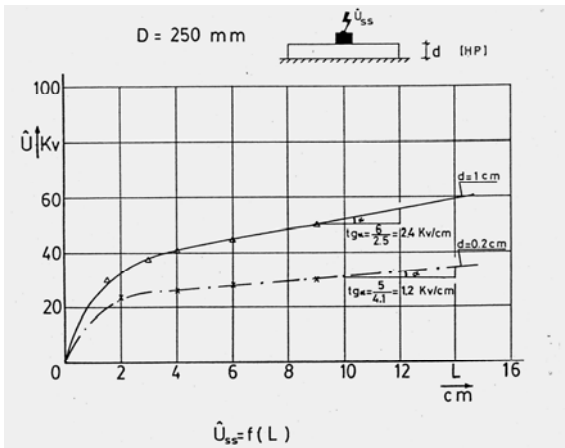
C

(1)

:4-4

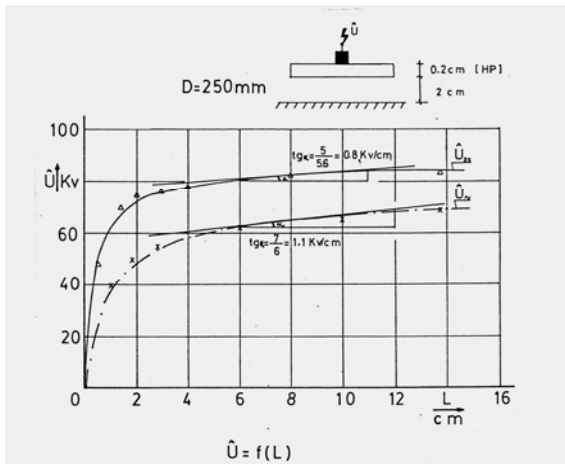
:

(11)



(12)

$d = 1$ cm $d = 0.2$ cm



$U_d = f(L)$ (13)

U_{ss} U_{\sim}

L

D

0

(25/30)kV/cm

(0.8/1,1)kV/cm

60kV

30kV

80kV

0

22kV

2cm

40kV

20(kV/cm)

.25(kV/cm)

5(kV/cm)

(0.8–1.1)kV/cm

(2.2-2.6)KV/Cm

:7-4

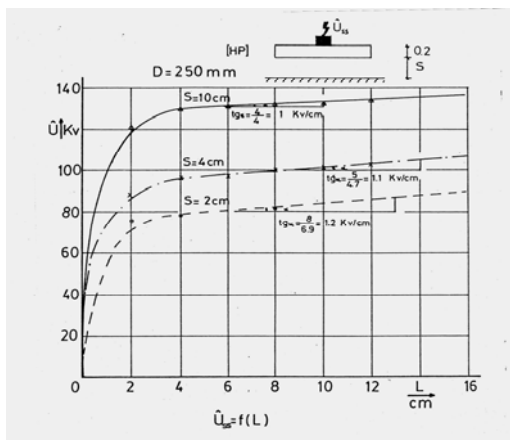
:

(16)

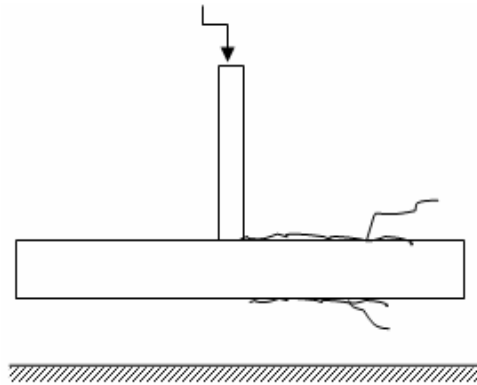
(14)

(1)

(15)



(16)



(14)

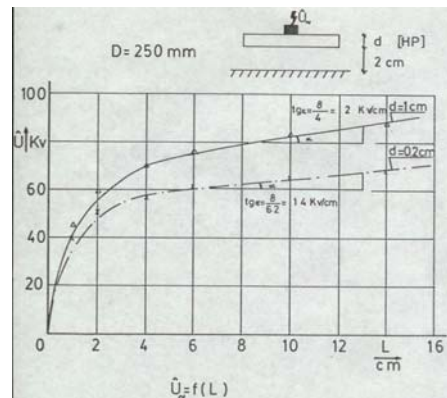
ϵ_r

-5

:

)

(



(15)

References*

- [1] A. Kuchler, Hochspannungs technik, Springer 2004.
- [2] M. Beyer, W. Bocet, K. Moller, W. Zaengl; Hochspannungs technik; Springer-verlag, Berlin-Heidelberg, 1986.
- [3] Y. Julliard, R. Badent, A. J. Schwab; Behavior of Multiple Barrier Insulation Systems under Impulse conditions;IEEE2001.
- [4] (3+1) : .2005
- [5] Rayes, M. N. Untersuchungen an Ueberschlagsanordnungen in luft mit Teilstrcken von unterschiedlichem Entladungsverhalten bei Wechselfspannung. Diss, TU Braunschweig, 1987.