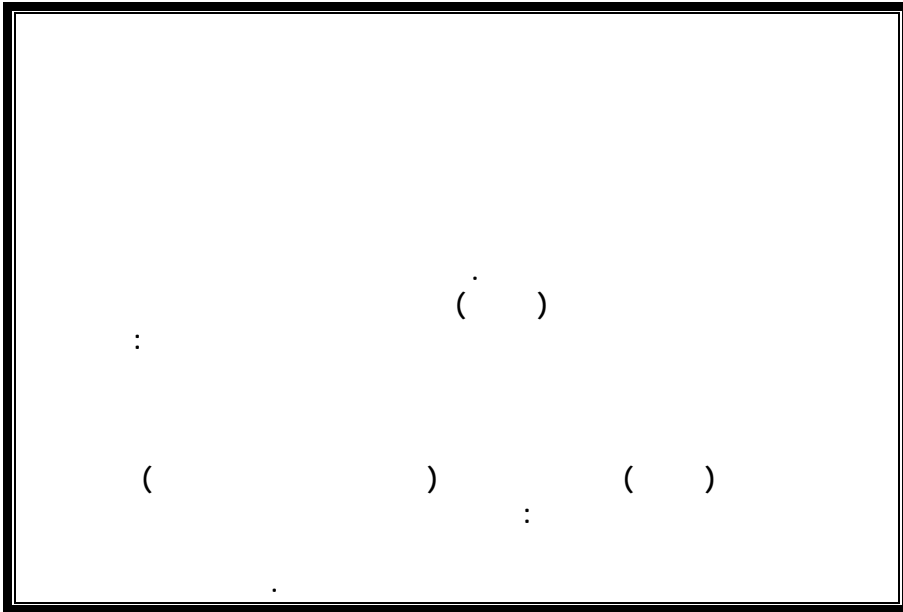


1

3

2

4



1

2

3

4

---

2005- 2003

-1

-:

( )

(%90)

---

: -2

( )

: -3

( )

: -4

:

( )

.  
: -5

-:



.  
:  
-:  
:  
:

(SPACE)  
(NATURE)  
(FACTOR  
OF PRODUCTION)  
(LOCATION)

(PROPERTY)

(CAPITAL)

.  
:  
-2-6  
.  
:  
-7  
-:

-:

---

:

-8

1984                      1952  
                                 -1971

1986

-

·  
1969

·

1997



2000

2006

: -9

: 1966 79

( ) 14 -

:

( ) 15 -

( 2 ) 19 -

"

40 -

---

"

.

: 2003 1 :  
4 -1

() :

() .

2003 1 -

" 3 2003 1 -

:

" 4 2003 1 " -

" " 5

" 2003 1 -  
**-10**

1962 26

1965 25

:

. -:  
**-1-10**

-

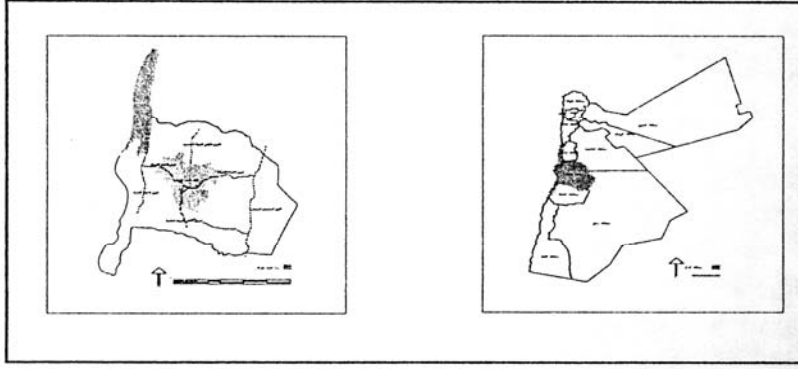
-1-1-10

(%3.6 ( 3217)

(

(%14)

( 450)



(1)

-2-1-10

(%22.2 ( 70030)

(%8)

(%33.6 ( 15121)



(1)



(2)



(3)



(4)

( 19460)

( 1100)

(%6)

(%1.9)

( 5000)

( 500)

(%31.3)

(%0,8)

( 362.39)

(%2.7)

( 8.81)

(%3)

( 1354.13)



(5)



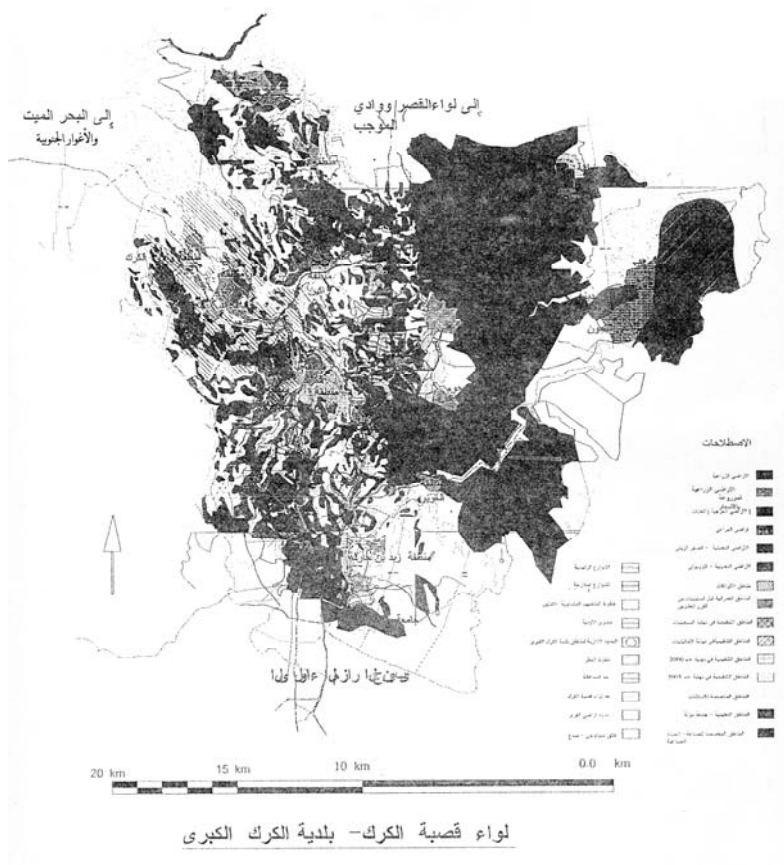
(6)



(7)



(8)



( )

(2)



-3-1-10

: -

-1

( ) (%11) ( 1.14)  
(%1.82) ( 5853)  
(%3.5) ( 1577.11)  
( 200)

(%8) ( 40)  
( 50)



(9)



(10)



(11)

-2

.( 350)

:

-3

(%1.87) ( 843.17)  
( 6.218700)

( 600) ( 1.514)  
( 13)  
-4

.( 3)  
(%2.37) -

)  
2000 ( )  
(%0.4) ( 185.6)

%3.3 (%20.1)  
%12.6 (%3.9) %18.1  
%73.2 (%3.5) %16.5 (%3.6)

%73.7

%71.9



(12)



(13)



(14)



(15)



(16)



(17)

:

-4-1-10

( )



(18)



(19)



(20)



(21)



(22)



(23)



(24)



(25)



(26)





(27)



(28)



(29)



(30)



(31)



(32)

: -5-1-10

-

( 383)

.( 265)

( 175)



(33)



(34)



(35)



(36)

( )

( . (33/132))

( . (33/132))

( . (33/132))

(%99.98)

( 35)  
1.2) ( 2)  
(  
( / 125)  
2025  
( / 2700) ( / 160)  
( / 2321)



(37)



(38)



( ) (39)

-2-10

:  
-1-2-10

:

.  
-2-2-10

1968 12

.( )

-3-2-10

-4-2-10

:

-

1986 24

-

-

---

-

**-3-10**

-:

-1-3-10

( 30)

45

( 2375.5)

(م222)

( 1.1)

-2-3-10



2001 ( 9600)

-3-3-10

.( )

-4-3-10

-5-3-10

---

-5-3-10

.( )  
( ) -11

( )

-:

: -1-11  
: -1-1-11  
( ) -

-:

(%0.32) ( 49)  
(%3.3) ( 500.1)  
(%2.8) ( 427.88)  
( 238.31) 2005 (%4.7) ( 703.41)  
(%1.6)  
( 1918.71) 2005  
(1) %12.7

	2005					
25,19	0.00	11.55	0.00	13.64	0.00	
224,17	40.42	1.55	133.4	48.80	0.0	
40,68	4.97	2.15	0.0	33.56	0.0	
152,34	0.0	17.43	0.0	134.31	0.6	
217,45	0.0	123.03	11.23	77.38	5.81	
	2005					
207,7	2.12	197.44	0.0	8.14	0.0	
116,95	35.85	8.27	42.0	30.83	0.0	
73,28	7.76	3.5	24.56	37.46	0.0	
44,02	0.0	0.42	25.37	18.23	0.0	
168,25	5.79	20.49	59.08	59.29	23.6	
161,03	0.76	152.28	4.32	3.67	0.0	
60,94	0.0	3.86	19.1	18.98	19.0	
45,92	6.03	5.84	34.05	0.0	0.0	
23,4	1.59	0.0	6.0	15.81	0.0	/
177,29	128.98	0.0	48.31	0.0	0.0	/
20,66	4.04	0.0	16.62	0.0	0.0	/
58,68	0.0	54.84	3.84	0.0	0.0	/
100,76	0.0	100.76	0.0	0.0	0.0	/
1918.71	238,31	703,41	427,88	500,1	49,01	

(1)

(%19.84) ( 380.79)

(%11.7) ( 224.17)

( 207.7) (%11.3) ( 217.45)

(%10.8)

(%1.3) ( 25.19)

---

( 44) ,(%2.1) ( 40.68)

.(%2.4) ( 45.92) (%2.3)



(40)



(41)

( 12.6)

( 8.66)

( 15.53)

( 3.2)

2.4)

( 6.07)

( 8.21)

( 10.43)

(

( 13.2)

( 2.2)

( 2.5) ( 1.77)  
(%0.19) ( 86.77)

(%0.09) 14.37

-2-1-11

(%7.41) ( 62.49)

( 624.09)

(%39.57)

:

**-2-11**

-1-2-11

(%21.56) ( 78.15)

.( 75.8)



(42)



(43)

( 188.08)

2001

-2-2-11

(%13.9)

-3-2-11



(44)



(45)



(46)

-12

(45)

:

•

•



•

2000

.(GIS)

•

79

1966

2

19

15

14

2003

1

40

2003 1

2003 1

.2003 1

2003 1

•

-:

-1

%33.6

%22.2



		%4.9
	%51	
%2.7		5
%3		
		-2
5853		-3
1577.11		%1.8
المساحة 843.17		3.5
		% 1.87
		-4
		( 362.39)

---

-5

( )

•

% 52

2001

•

•

•

•  
-:  
-1  
300  
%0.32 -:  
%3.3  
%1.6 2005 %4.7 %2.8  
( 1918.71) ■  
. 45 %12.7 ■  
%19.84  
%10.8 %11.3 %11.7  
■  
%0.09  
:  
-2  
■  
%21.56 78.15  
. 75.8

---

▪

-13

( )

-1-13

•

•

•

•

•

•

•

•

•

---

: -2-13

: -1-2-13

•

•

•



(47)



(48)

2003 1

•

•

•

•

•

---

:

-2-2-13

•

•

•

516.692

•

•

•

:

-3-2-13

•

•





(49)



(50)



: -4-2-13

: -

•

•

•

: -

•

•

•

2003 1 •

: -  
•

: -3-13  
•

15 14

40 19

1 2003 1

1 2003 1 2003

.2003  
-4-13

•

•



•

(Green buffer zone)

•

•

•

					<b>-14</b>
			1984		-1
				.250000/1	
2006					-2
				1993	-3
			-	-	
				.	
			2005		-4
				.	
			2004		-5
					2006-2004
79					-6
					1966
	2003	1			-7
			2001		-8
					.
				1985	-9
		2000			
					.
				2005	-10
					.
				2001	-11
					.
				2001	-12
					.
				2006	-13

---

				34
			2006	-14
				34
23				-15
	.2003	1		
	23			-16
		.2003	1	
	23			-17
		.2003	1	
	23			-18
		.2003	1	
			2000	-19
		1995		-20
.50000/1				-21
			2004	-22
/				
			1999	-23
				-24
		.1987		
		.2006/11/23		